

APPLICATION:

PRODUCT NAME:

## DrainKing WASTE VALVE

JOB NAME:

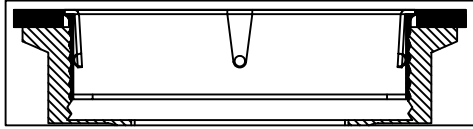
SPECIAL CONFIGURATION  
CHECK BASE MODEL AND OPTIONS

QUANTITY:

ITEM NO.

MODEL:

22438 w/ FLAT STRAINER & OVERFLOW BODY



OPTIONS OR MODIFICATIONS:

- SUPPLY LINES (24" OR 36") CIRCLE LENGTH
- ADD-ON FAUCET (6", 8", 10", 12", 14", 16") CIRCLE
- IN-LINE DUAL CHECK VALVE
- HANDLES (CROSS OR WRIST) CIRCLE STYLE
- VANDAL RESISTANT KIT
- OTHER \_\_\_\_\_

FEATURES:

- \* DUAL TEFLON SEALS
- \* STAINLESS STEEL BALL
- \* CAST RED BRASS BODY
- \* EXTRA SURDY STAINLESS STEEL CLAMPING RING
- \* "CLEAR THROUGH" OPENING, NO NEED TO DISASSEMBLE IF SNAKING IS REQUIRED
- \* INDUSTRY STANDARD "SEALING" ANGLE - FITS FLUSH TO STANDARD STAINLESS STEEL SINKS
- \* STAINLESS STEEL FLAT STRAINER
- \* 1/4 TURN FULLY OPENS AND CLOSES VALVE
- \* END CAP W/ GASKET (INSTALLED)
- \* SUPPLIED WITH:  
ALTERNATE SLIP JOINT NUT & WASHER

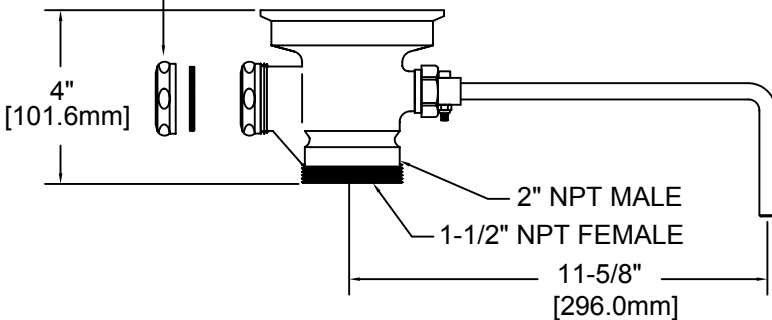
DRAIN RATE:

- \* 12 GPM

SHIPPING WEIGHT

- \* 5.5 LBS

ALTERNATE END CAP  
W/ GASKET



ROUGH-IN:

DRAIN:

